



CRUISERS YACHTS

*34 GLS* 1/0



# 34 GLS <sup>1/0</sup>

The GLS series continues its powerful, entertainment-centered yacht line with the 34 GLS. The 34 GLS's cockpit features two cockpit L-shaped seating areas. The portside seating has an adjustable backrest while the larger starboard side seating converts into a large, aft facing sunpad. The lower salon features an aft stateroom, a dinette that converts into a berth, fridge, and microwave.



**GALLEY** – The galley features a fiberglass inlay sink, fridge, grill, and storage. The galley is located in the cockpit for easy flow of conversation to guest sitting on the L-shaped seating.

**BOW SEATING** – The bow seating features a table that easily converts into a sunpad, Rockford Fosgate speakers, and multiple cupholders. An optional foredeck shade keeps your guests nice and cool.



**AFT SEATING** – On the larger starboard side, the aft backrest can be flipped into the forward position to create a large aft-facing sunpad. There is also a personal, aft-facing seat on the port side.



# 34 GLS I/O

## LAYOUT & SPECIFICATIONS

### SPECIFICATIONS

	IMPERIAL	METRIC
LOA	36' 9"	11,1 m
BEAM	11' 10"	3,6 m
BRIDGE CLEARANCE (TOP OF MAST LIGHT)	12' 7"	3,8 m
DRAFT DOWN	36"	0,9 m
DRAFT UP	24"	0,61 m
FUEL CAPACITY	217 gal	821 L
WATER CAPACITY	25 gal	94,63 L
WASTE CAPACITY	25 gal	94,63 L
WEIGHT – DRY	16,000 lbs	7257 kg

\*\*\* Weight, Bridge Clearance, Draft subject to change \*\*\*

\*\*\* Consumable liquids may be less than max capacity \*\*\*



Main Deck



Accommodations



### HULL COLOR

White

### WEATHER COVERS

Bow, Cockpit, and Seat Covers  
Black or White

### COCKPIT SEATING COLOR

White & Gray

### INTERIOR COLOR

Neutral  
Gray

### INTERIOR WOOD

Dark Ebony Oak

### MECHANICAL

AC/DC Panel w/ Voltmeters  
Anchor  
Battery Charger  
Battery Parallel Switch  
Bilge Coating, White  
Bilge Pumps (3), w/High Water Alarms  
Bonding Systems w/Transom Zinc  
Bronze Seacocks and Thru Hulls  
    on all Underwater Fittings  
Dockside Power – Dual 30 Amp Service  
Engine Room Blowers  
Fire Extinguisher, Automatic  
Fire Extinguishers, Handheld (3)  
Fuel Overflow Recovery System  
Ground Fault Interrupter Outlets  
Horn  
Hydraulic Trim Tabs  
LED Lighting  
Seawater Strainers  
Stainless Steel Propellers  
Tilt Steering Wheel

### MAIN DECK

Walk-Thru Windshield  
Cockpit Shower  
Cockpit Seating, White & Gray  
Deck Cleats  
Dockside Water Hookup  
Fiberglass Cockpit, Self Draining  
Gunwale Molding, Stainless Steel  
Hardtop, White  
Helm Seat Storage  
Storage (2), L-Shaped Seating  
Transom Boarding Gate  
Welded Stainless Bow Rails  
Windlass w/SS Anchor, Line & Chain  
Windshield Wiper  
Wireless Phone Charging Pad

### WETBAR

Refrigerator, 120V  
Sink, Set in Fiberglass  
Solid Surface Countertop  
Storage Under Wet Bar

### ACCOMODATIONS LEVEL

Aft Berth  
Amtico Flooring  
Head Sink  
Electric Head w/ Holding Tank  
Interior Storage  
Microwave  
Mirrors w/ Storage, Head  
Opening Port Hole Above Lower Salon  
    Entry Stairs  
Opening Port Hole in Head  
Refrigerator  
Shower in Head  
Starboard Window

### HULL

White w/ Kingston Gray Plank  
White w/ Slate Gray Plank  
White w/ Black Plank  
Bottom Paint

### MECHANICAL

Air Conditioning System  
Mercury or Volvo Radar, White or Black  
Simrad or Garmin VHF Radio, White or Black  
SeaKeeper 3  
Batteries w/ Absorbed Glass Mat  
Kohler 6 kW Diesel Generator w/Sound Shield, 120V  
Kohler 5 kW Diesel Generator w/Sound Shield, 220V  
Macerator w/Overboard Discharge  
Algae-X Fuel Conditioning System  
Fresh Water Cockpit Washdown System  
Swim Platform w/ Electric Swim Step  
Underwater Lighting

### MAIN LEVEL

Cockpit Seating: Sand (Ultraleather), Dolphin Gray (Ultraleather), Havana (Ultraleather)  
Black Hardtop  
Foredeck Shade, White or Black  
Retractable Cockpit Shade, White or Black  
Bow Filler Cushion w/ Table  
27" Salon TV  
Electric Cockpit Grill, 120V or 220V  
Helm Seat Refrigerator, 120V or 220V  
Wet Bar Ice Maker, 120V or 220V  
SeaDek, Gray or Saddle

### PACKAGES

Towel Package  
Exterior Pillow Package

## ENGINE OPTIONS

### GAS ENGINES

Mercury 6.2L, 350 HP  
Mercury 8.2 Mag, 380 HP  
Volvo V8, 350 HP  
Volvo D4, 320 HP

# 34 GLS I/O

## COLORS & MATERIALS

### HULL COLORS



White Hull



White Hull  
w/ Black Plank



White Hull  
w/ Kingston Gray Plank



White Hull  
w/ Slate Gray Plank

COLORS  
SHOWN ON  
A 38 GLS OB

### ENGINE COLORS



Black



White

### HARDTOP COLORS



Black



White

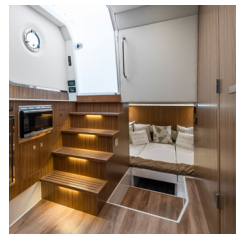
### FLOORING



SeaDek Gray

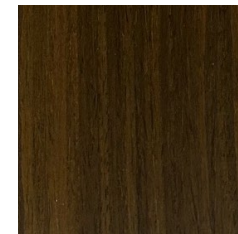


SeaDek Saddle



Amtico

### INTERIOR WOOD



Dark Ebony Oak

### COCKPIT SEATING



White & Gray



Sand  
(Ultraleather)



Dolphin Gray  
(Ultraleather)



Havana  
(Ultraleather)

### COCKPIT PILLOW PACKAGE

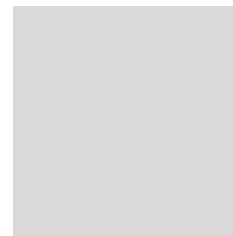


Blue

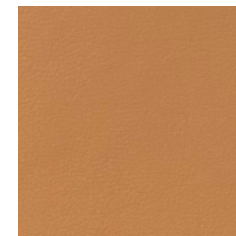


Orange

### SOUTH BEACH PACKAGE



Kingston Gray  
Hull



Havana  
Seating



### INTERIOR BEDDING - NEUTRAL



Master Stateroom

Throw



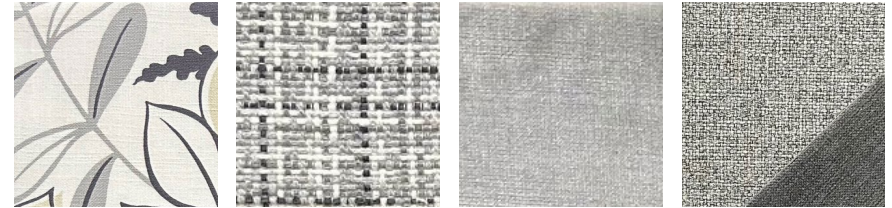
VIP Stateroom

Throw



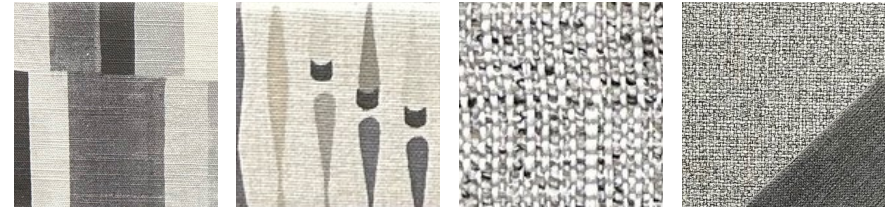
3rd Stateroom

### INTERIOR BEDDING - GREY



Master Stateroom

Throw



VIP Stateroom

Throw



3rd Stateroom



**CRUISERS YACHTS**

[CRUISERSYACHTS.COM](http://CRUISERSYACHTS.COM)