



CRUISERS YACHTS

**34 GLS** OB



## 34 GLS OB

The GLS series continues its powerful, entertainment-centered yacht line with the 34 GLS. The 34 GLS's cockpit features two cockpit L-shaped seating areas. The portside seating has an adjustable backrest while the larger starboard side seating converts into a large, aft facing sunpad. The lower salon features an aft stateroom, a dinette that converts into a berth, fridge, and microwave.



**BOW SEATING** – The bow seating features a table that easily converts into a sunpad, Rockford Fosgate speakers, and multiple cupholders. An optional foredeck shade keeps your guests nice and cool.

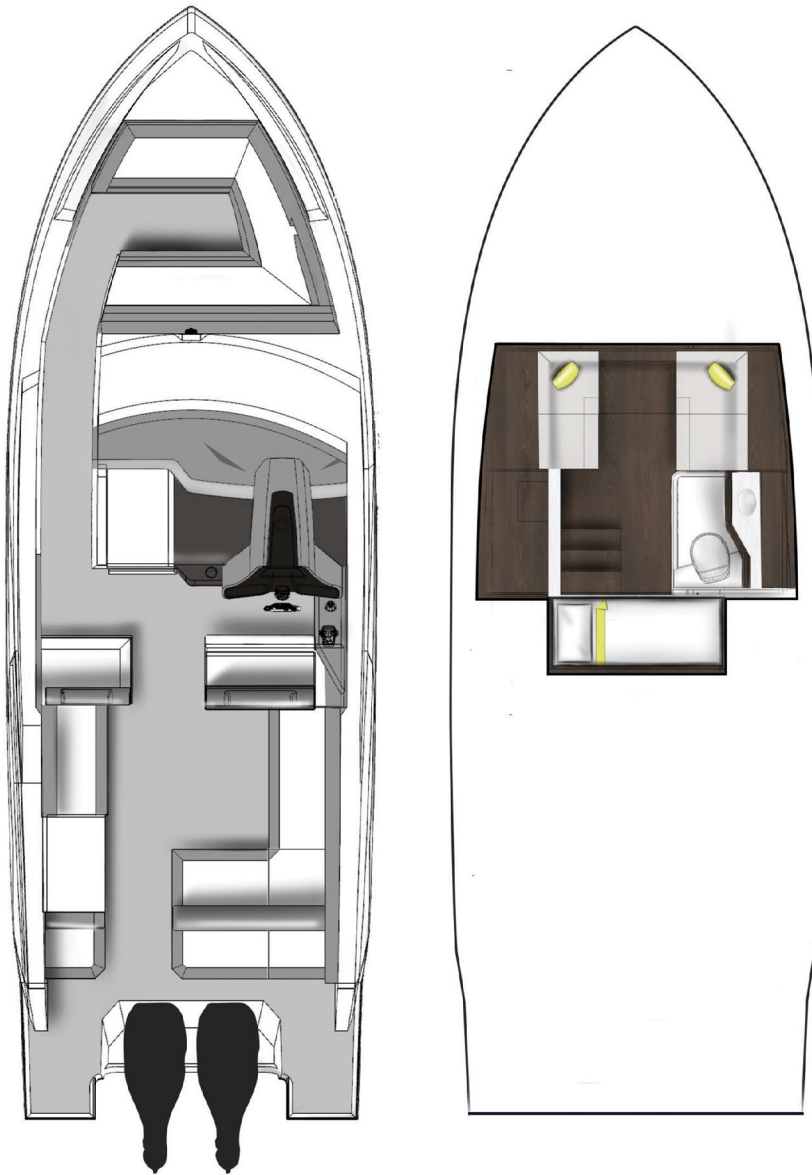


**COCKPIT** – The 34 GLS's cockpit features two cockpit L-shaped seating areas. The portside seating has an adjustable backrest that when flipped in the aft facing position, makes a companion seat. On the larger starboard side, the aft backrest can be flipped into the forward position to create a large aft-facing sunpad. There is also a personal, aft-facing seat on the port side.



**LOWER SALON** – The lower salon features a dinette that converts into a spacious berth. The lower galley is complete with a fridge, microwave, and TV.





Main Deck

Accommodations

### SPECIFICATIONS

	IMPERIAL	METRIC
LOA – OUTBOARDS DOWN	35' 10"	10,9 m
LOA – OUTBOARDS UP	38' 4"	11,7 m
BEAM	11' 10"	3,6 m
BRIDGE CLEARANCE (TOP OF MAST LIGHT)	12' 11"	3,94 m
DRAFT DOWN	42"	1,1 m
DRAFT UP	26"	0,7 m
FUEL CAPACITY	217 gal	821 L
WATER CAPACITY	25 gal	94,63 L
WASTE CAPACITY	25 gal	94,63 L
WEIGHT – DRY	15,800 lbs	7167 kg

\*\*\* Weight, Bridge Clearance, Draft subject to change \*\*\*

\*\*\* Consumable liquids may be less than max capacity \*\*\*



### HULL COLOR

White

### WEATHER COVERS

Bow & Cockpit Seat  
Black

### COCKPIT SEATING COLOR

White & Gray

### INTERIOR COLOR

Neutral  
Gray

### INTERIOR WOOD

Dark Ebony Oak

### MECHANICAL

AC/DC Panel w/ Voltmeters  
Anchor  
Battery Charger  
Battery Parallel Switch  
Bilge Coating, White  
Bilge Pumps (3), w/High Water Alarms  
Bonding Systems w/Transom Zinc  
Bronze Seacocks and Thru Hulls  
on all Underwater Fittings  
Dockside Power – Dual 30 Amp Service  
Horn  
Engine Room Blowers  
Fire Extinguisher, Automatic  
Fire Extinguishers, Handheld (3)  
Fuel Overflow Recovery System  
Ground Fault Interrupter Outlets  
Hydraulic Trim Tabs  
LED Lighting  
Seawater Strainers  
Stainless Steel Propellers

### MAIN DECK

Walk-Thru Windshield  
Cockpit Seating, White & Gray  
Cockpit Shower  
Deck Cleats  
Dockside Water Hookup  
Fiberglass Cockpit, Self Draining  
Gunwale Molding, Stainless Steel  
White Hardtop  
Helm Seat Storage  
Storage (2), L-Shaped Seating  
Transom Boarding Gate  
Welded Stainless Bow Rails  
Windlass  
Windshield Wiper  
Wireless Phone Charging Pad

### WETBAR

Sink, Set in Fiberglass  
Solid Surface Countertop  
Storage Under Wet Bar

### ACCOMODATIONS LEVEL

Aft Berth  
Antico Flooring  
Head Sink  
Electric Head w/ Holding Tank  
Interior Storage  
Microwave  
Mirrors w/ Storage, Head  
Opening Port Hole Above Lower Salon  
Entry Stairs  
Opening Port Hole in Head  
Refrigerator  
Shower in Head  
Starboard Window

### HULL

White w/ Kingston Gray Plank  
White w/ Slate Gray Plank  
White w/ Black Plank  
Bottom Paint

### MECHANICAL

Air Conditioning System, 120V / 60 Hz  
Air Conditioning System 220V / 50 Hz  
Mercury Verado 300 HP w/ Joystick Piloting, Black or White  
Mercury V10, 400 HP w/ Joystick Piloting, Black or White  
SeaKeeper 3  
Batteries w/ Absorbed Glass Mat  
Kohler 6 kW Diesel Generator w/Sound Shield, 120V  
Kohler 5 kW Diesel Generator w/Sound Shield, 220V  
Macerator w/ Overboard Discharge  
Fresh Water Cockpit Washdown System  
Reverso Engine Flush System  
Underwater Lighting  
Mercury Radar, White or Black  
Slimrad VHF Radio, White or Black

### MAIN LEVEL

Cockpit Seating: Sand (Ultraleather), Dolphin Gray (Ultraleather), Havana (Ultraleather)  
Black Hardtop  
Foredeck Shade, White or Black  
Retractable Cockpit Shade, White or Black  
Bow Filler Cushion w/ Table  
27" Salon TV  
Cockpit Electric Grill, 120V or 220V  
Helm Seat Refrigerator  
Wet Bar Ice Maker, 120V or 220V  
Bow/Cockpit SeaDek, Gray or Saddle

### PACKAGES

Towel Package  
Exterior Pillow Package

## ENGINE OPTIONS

### GAS ENGINES

Mercury Verado 300HP w/Joystick Piloting, Black or White  
Mercury V10 w/Joystick Piloting, Black or White

### HULL COLORS



White Hull



White Hull  
w/ Black Plank



White Hull  
w/ Kingston Gray Plank



White Hull  
w/ Slate Gray Plank

COLORS  
SHOWN ON  
A 38 GLS OB

### ENGINE COLORS



Black



White

### HARDTOP COLORS



Black



White

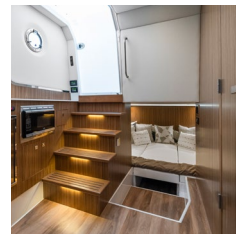
### FLOORING



SeaDek Gray



SeaDek Saddle



Amtico

### INTERIOR WOOD



Dark Ebony Oak

### COCKPIT SEATING



White & Gray



Sand  
(Ultraleather)



Dolphin Gray  
(Ultraleather)



Havana  
(Ultraleather)

### COCKPIT PILLOW PACKAGE

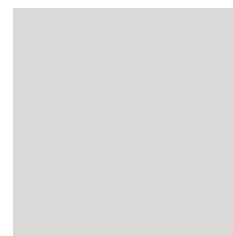


Blue

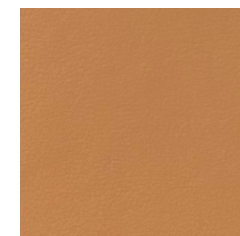


Orange

### SOUTH BEACH PACKAGE



Kingston Gray  
Hull



Havana  
Seating



### INTERIOR BEDDING - NEUTRAL



Master Stateroom

Throw



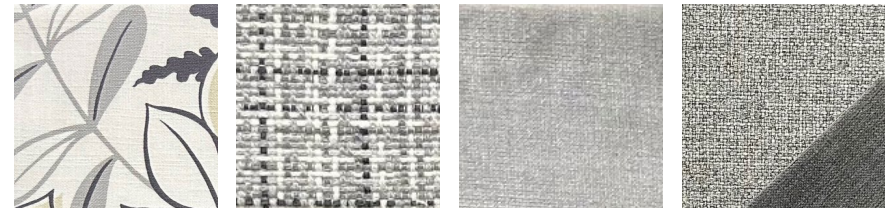
VIP Stateroom

Throw



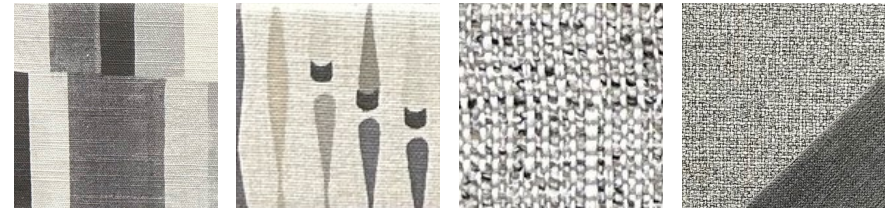
3rd Stateroom

### INTERIOR BEDDING - GREY



Master Stateroom

Throw



VIP Stateroom

Throw



3rd Stateroom



**CRUISERS YACHTS**

[CRUISERSYACHTS.COM](http://CRUISERSYACHTS.COM)